

SERVICE

2702B, 2702BM, AND 2702BMG TELEPHONE SETS

CONNECTIONS

1. General

1.01 This section contains information on 2702B(MD), 2702BM, and 2702BMG telephone sets (Fig. 1, 2, and 3).

1.02 Reissued to:

- Add Information on D-180896 Kit of Parts (polarity guard)
- Add information on 2702BMG telephone set
- Revise Fig. 2 and Tables A through D.

1.03 If a polarity guard is required in a 2702B or 2702BM set, refer to Table A for connections and Section 502-703-100 for installation information.

1.04 Refer to Tables B, C, and D for line and ringer connections.

1.05 Figure 4 or 5 indicates the termination of the D4BT mounting cord in sets equipped with 4010-or 4228-type networks, respectively.

1.06 Refer to Section 501-320-100 if conversion to four or eight party ringing is required.

◆ TABLE A ◆

POLARITY GUARD CONNECTIONS (NOTE)

TEL SET NET.	POLARITY GUARD	WIRE OR LEAD	COLOR	REMOVE FROM NET.	CONNECT TO		
					NET.	POLARITY GUARD	
4010-type	D-180229 Kit of Parts	Dial	BK	RR		3	
		Line Switch	BR	C		4	
		Polarity Guard	R				3
			BK				4
			G			RR	
			W			C	
4228-type	D-180896 Kit of Parts	Line Switch	W	F		T	
			BR	C		S	
		Polarity Guard	G			F	
			W			C	

Note: For use when specified by local instructions for end-to-end signaling installations.

NOTICE

Not for use or disclosure outside the
Bell System except under written agreement

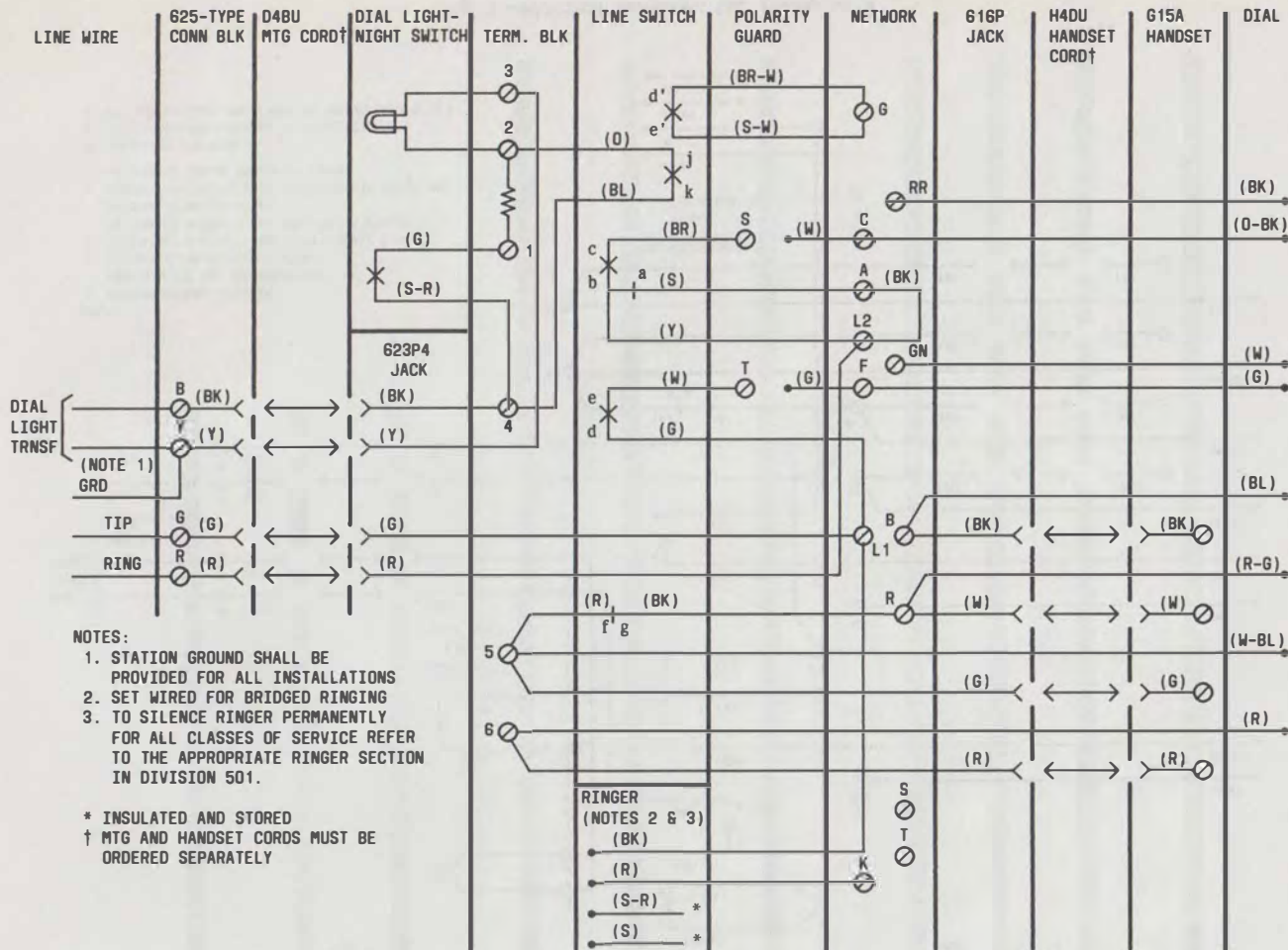


Fig. 3—2702BMG Telephone Set, Connections

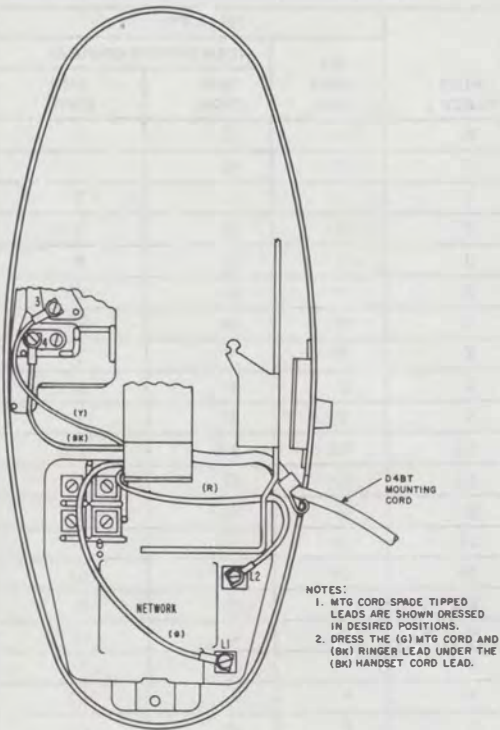


Fig. 4—Method of Terminating D4BT Mounting Cord on Sets with 4010-Type Network

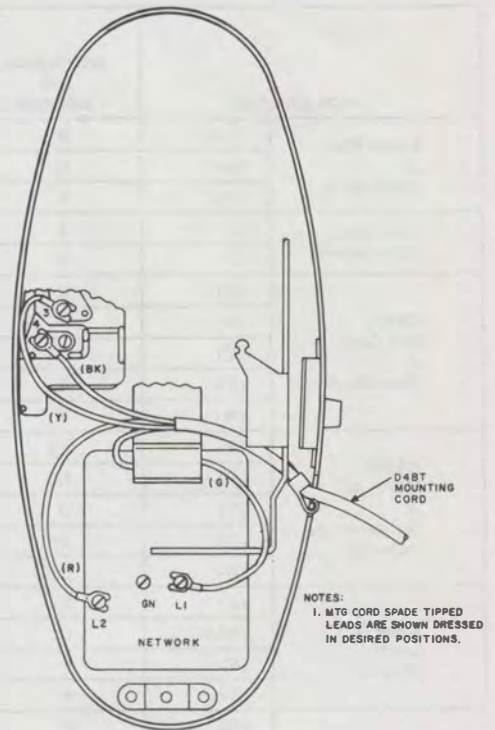


Fig. 5—Method of Terminating D4BT Mounting Cord on Sets with 4228-Type Network

TABLE B

LINE AND RINGER CONNECTIONS
2702B (MD) TELEPHONE SET WITH D5AK (MD) MOUNTING CORD

WIRE OR LEAD		INDIVIDUAL OR BRIDGED †	RINGER PARTY ‡	TIP PARTY		
				NO IDENT GRD	IDENTIFYING GROUND	
					1000 OHMS	2650 OHMS
Inside Wire at Conn Block	Ring	R	R	R	R	R
	Tip	G	G	G	G	G
	Grd	Y	Y	Y	Y	Y
Dial Light Transformer	1	Y	Y	Y	Y	Y
	2	B	B	B	B	B
D5AK Mtg Cord at Conn Block	(R)	R	R	G	G	G
	(G)	G	G	R	R	R
	(Y)	G	Y	Y	Y	Y
	(BK)	B	B	B	B	B
	(W)	Y	Y	Y	Y	Y
D5AK Mtg Cord at Set Terminals (Note 2)	(R)	L2	L2	L2	L2	L2
	(G)	L1	L1	L1	C	C
	(Y)	G	G	G	G	G
	(BK)	4†	4†	4†	4†	4†
	(W)	3†	3†	3†	3†	3†
Ringer Leads (Note 1)	(R)	K	K	K	K	K
	(BK)	G	G	G	G	G
	(S)	*	*	*	L1	*
	(S-R)	*	*	*	*	L1
Line Switch (Note 3)	(BR)	C	C	F	F	F
	(W) [S-W]	F	F	C	B	B
Strap From H	(BK) [S-BK]	A	A	A	*	*

Note 1: To silence ringer permanently for all classes of service, refer to the appropriate section in Division 501.

Note 2: When connecting the D5AK mounting cord leads for tip party identifying ground, use D-161488 connectors and M1W straps as required to extend conductor leads.

Note 3: This change does not apply to sets equipped with a polarity guard.

* Insulated and stored.

† Terminals on lamp terminal block.

‡ Factory-wired for bridged or ringer party.

() Current color code.

[] MD color code.

TABLE C

**LINE AND RINGER CONNECTIONS
2702B (MD) TELEPHONE SET WITH D4BT MOUNTING CORD**

WIRE OR LEAD		INDIVIDUAL OR BRIDGED	RING PARTY	TIP PARTY		
				NO IDENT GRD	IDENTIFYING GROUND	
					1000 OHMS	2650 OHMS
Inside Wire at Conn Block	Ring	R	R	R	R	R
	Tip	G	G	G	G	G
	Grd	Y	Y	Y	Y	Y
Dial Light Transformer	1	Y	Y	Y	Y	Y
	2	B	B	B	B	B
D4BT Mtg Cord at Conn Block	(R)	R	R	G	G	G
	(G)	G	G	R	R	R
	(Y)	Y	Y	Y	Y	Y
	(BK)	B	B	B	B	B
D4BT Mtg Cord at Set Terminals	(R)	L2	L2	L2	L2	L2
	(G)	L1	L1	L1	C	C
	(Y)	3†	3†	3†	3†	3†
	(BK)	4†	4†	4†	4†	4†
Ringer Leads (Note 1)	(R)	K	K	K	K	K
	(BK)	L1	3†	3†	3†	3†
	(S)	*	*	*	L1	*
	(S-R)	*	*	*	*	L1
Line Switch (Note 2)	(BR)	C	C	F	F	F
	(W) [S-W]	F	F	C	B	B
Strap From H	(BK) [S-BK]	A	A	A	*	*

Note 1: To silence ringer permanently for all classes of service, refer to the appropriate section in Division 501.

Note 2: This change does not apply to sets equipped with a polarity guard.

* Insulated and stored.

† Terminals on lamp terminal block.

() Current color code.

[] MD color code.

◆ TABLE D ◆

2702BM AND 2702BMG TELEPHONE SET LINE AND RINGER CONNECTIONS WITH D4BU MOUNTING CORD

WIRE OR LEAD		COLOR	INDIVIDUAL OR BRIDGED (NOTE 3)	RINGER PARTY	TIP PARTY		
					NO IDENT GRD.	IDENTIFYING GROUND (NOTE 4)	
						1000 OHMS	2650 OHMS
Line Wire at Conn Block	Ring	R	R	R	R	R	
	Tip	G	G	G	G	G	
	GRD	Y	Y	Y	Y	Y	
Dial Light Transformer	1	Y	Y	Y	Y	Y	
	2	BK	B	B	B	B	
623P4 Jack Assembly in Set (Note 2)		R	L2	L2	L1	C	
		G	L1	L1	L2	L2	
		Y	3	3	3	3	
		BK	4	4	4	4	
Ringer Lead (Note 1)		BK	L1	3	3	3	
		R	K	K	K	K	
		S	*	*	*	L1	*
		S-R	*	*	*	*	L1
Line Switch at Net. (Note 5)		W	F	F	C	B	
		BR	C	C	F	F	F
Strap of Net.		BK	A	A	A	*	

Note 1: To silence ringer permanently for all classes of service, refer to the appropriate section in Division 501.

Note 2: When connecting the 623P4 jack assembly leads for tip party identifying ground, use D-161488 connectors and M1W straps as required to extend conductor leads.

Note 3: Sets are factory-wired for bridged service.

Note 4: For tip party service with identifying ground, remove insulate and store (BK) strap between network terminals A and H.

Note 5: This change does not apply to sets equipped with a polarity guard.

* Insulated and stored.