

SPEAKERPHONE SYSTEMS—3-TYPE

2565-TYPE TELEPHONE SETS

CONNECTIONS

1. GENERAL

1.01 This section is reissued to:

- Change section reference in 2.02.
- Show 666A transmitter MD.
- Include connections to 55-type control units which are marked 55A* to designate units modified by Western Electric Company to 55B control unit configuration and to show strap added between control unit terminal 4 and 5 (20 and 21 for 55A*).

2. CONNECTIONS

2.01 This section provides connections between components of the 3-type speakerphone system and the 2565GK, 2565HK, and 2565LK telephone sets.

2.02 ♦ The connections shown in this section are for use with 1A1 or 1A2 KTS. To convert telephone sets for 1A KTS or for complete set connections, refer to appropriate section in Division 502.♦

2.03 Use a 55B control unit with these sets, or a 55A modified for use with TOUCH-TONE® telephone sets. Modified control units may be identified by an asterisk following the code.

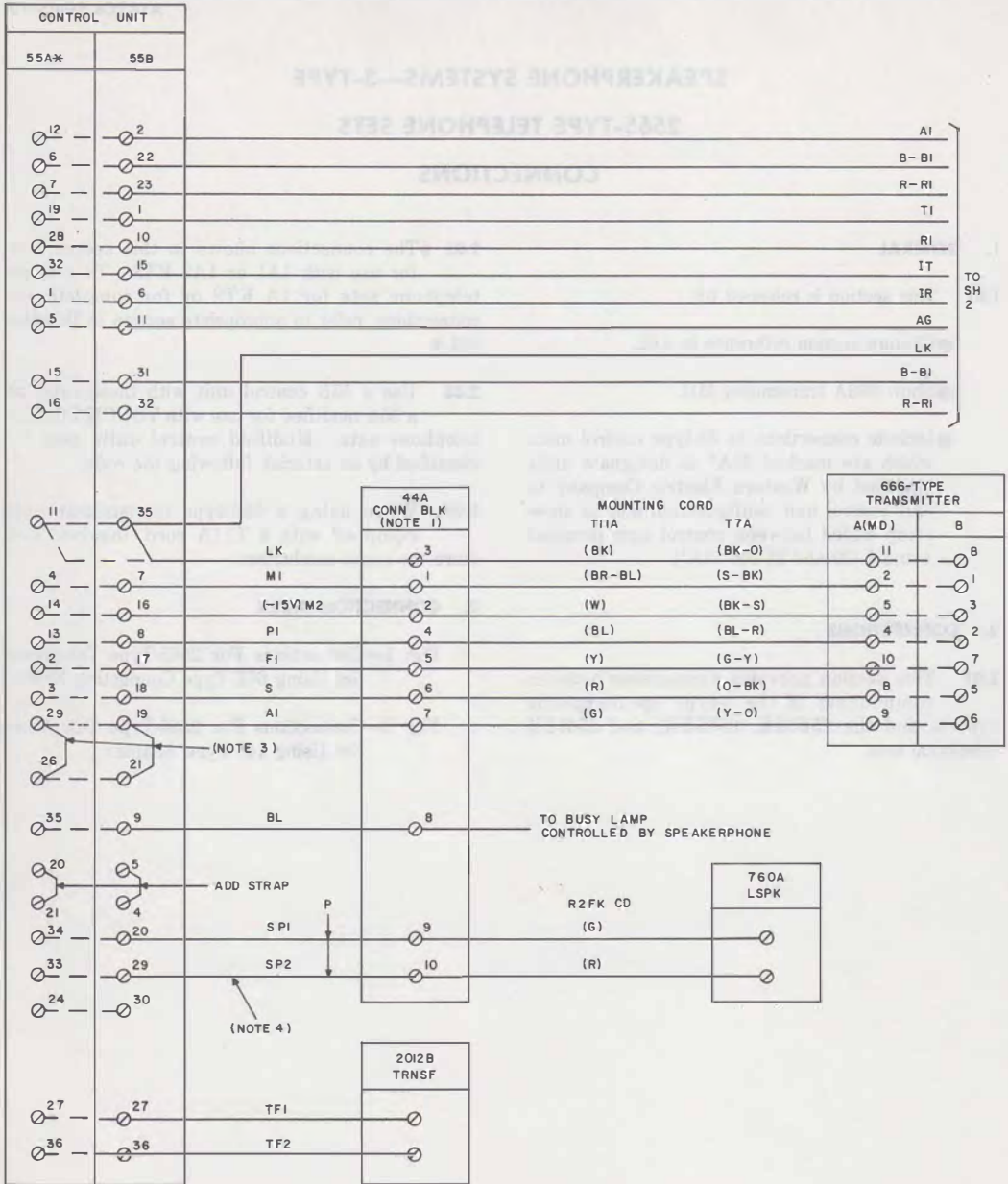
2.04 When using a 666-type transmitter unit equipped with a T11A cord, insulate and store the spare conductors.

3. CONNECTION INDEX

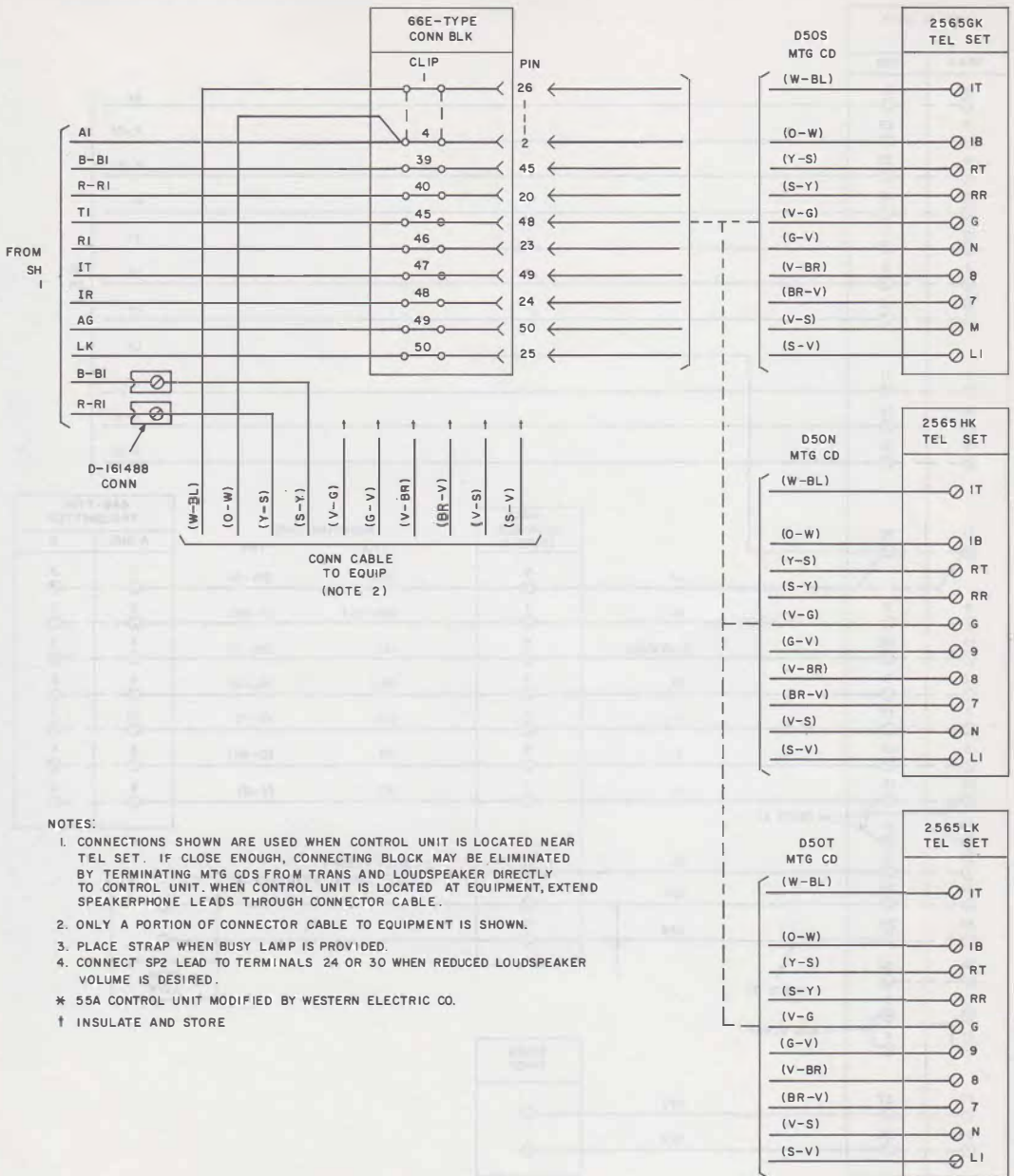
Fig. 1—Connections For 2565-Type Telephone Set Using 66E-Type Connecting Block

Fig. 2—Connections For 2565-Type Telephone Set Using 149-Type Adapter





◆ Fig. 1—Connections For 2565-Type Telephone Set Using 66E-Type Connecting Block (Sheet 1 of 2) ◆



NOTES:

1. CONNECTIONS SHOWN ARE USED WHEN CONTROL UNIT IS LOCATED NEAR TEL SET. IF CLOSE ENOUGH, CONNECTING BLOCK MAY BE ELIMINATED BY TERMINATING MTG CDS FROM TRANS AND LOUDSPEAKER DIRECTLY TO CONTROL UNIT. WHEN CONTROL UNIT IS LOCATED AT EQUIPMENT, EXTEND SPEAKERPHONE LEADS THROUGH CONNECTOR CABLE.
 2. ONLY A PORTION OF CONNECTOR CABLE TO EQUIPMENT IS SHOWN.
 3. PLACE STRAP WHEN BUSY LAMP IS PROVIDED.
 4. CONNECT SP2 LEAD TO TERMINALS 24 OR 30 WHEN REDUCED LOUDSPEAKER VOLUME IS DESIRED.
- * 55A CONTROL UNIT MODIFIED BY WESTERN ELECTRIC CO.
 † INSULATE AND STORE

Fig. 1—Connections For 2565-Type Telephone Set Using 66E-Type Connecting Block (Sheet 2 of 2)

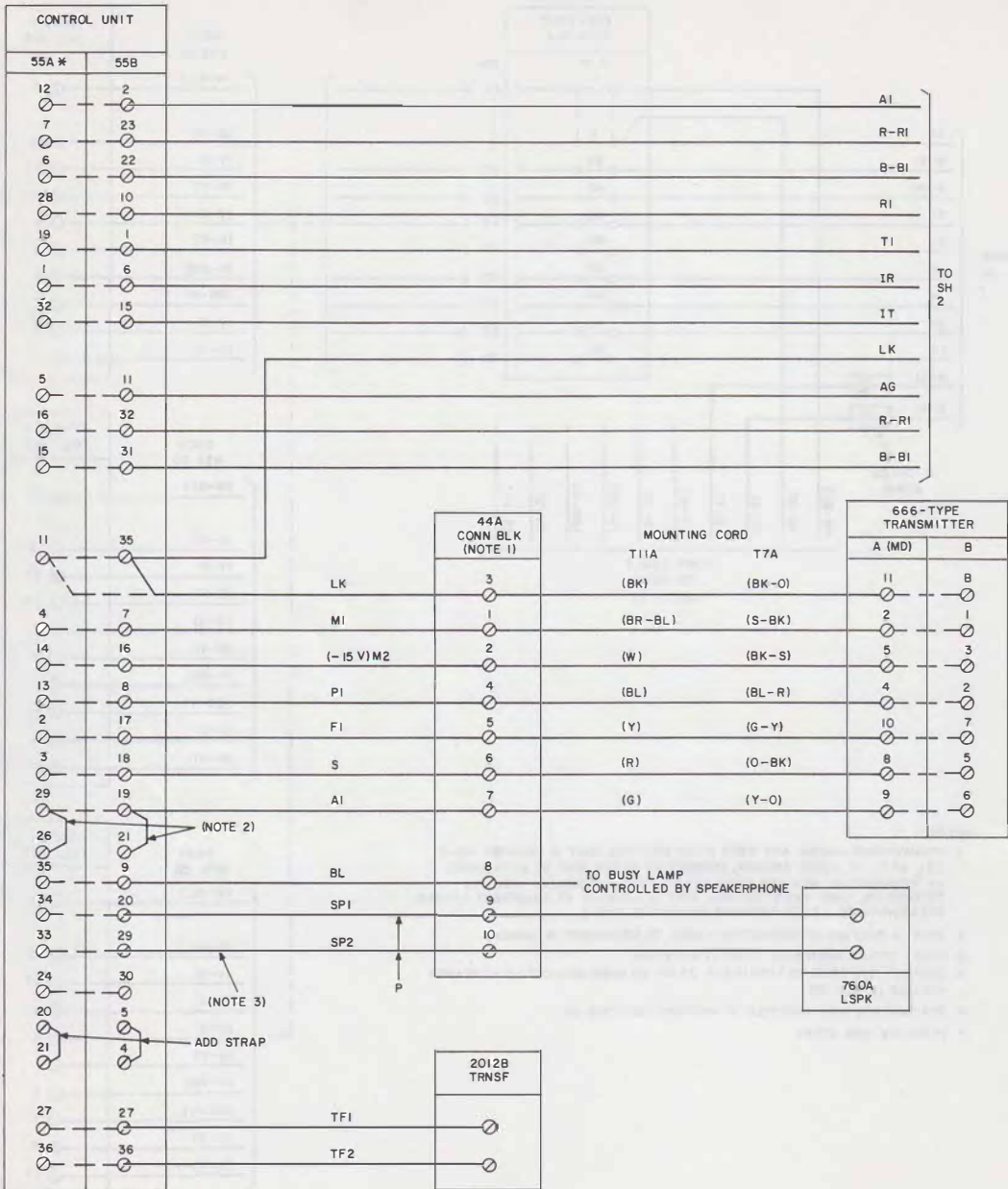
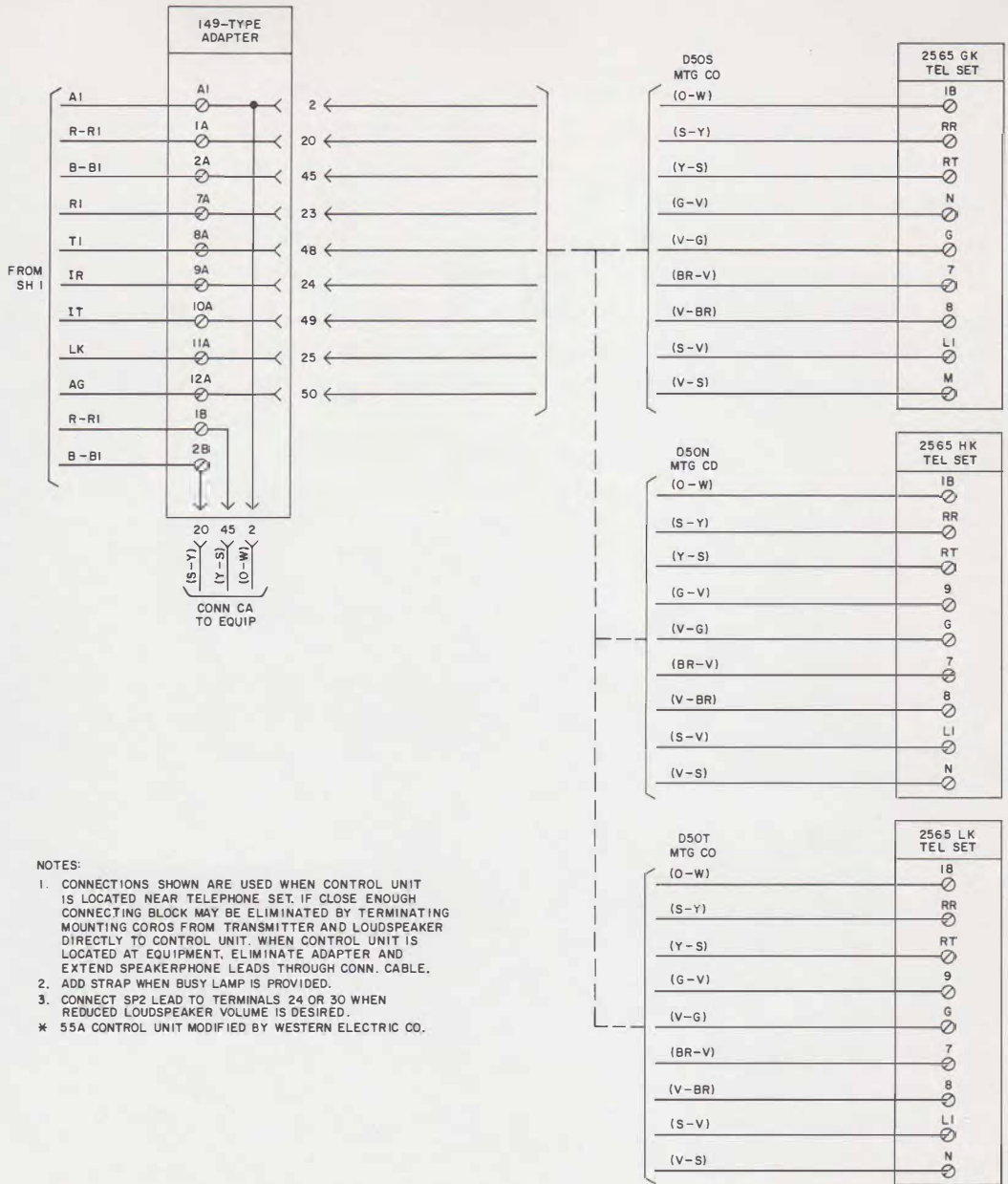


Fig. 2—Connections For 2565-Type Telephone Set Using 149-Type Adapter (Sheet 1 of 2)



NOTES:

1. CONNECTIONS SHOWN ARE USED WHEN CONTROL UNIT IS LOCATED NEAR TELEPHONE SET. IF CLOSE ENOUGH CONNECTING BLOCK MAY BE ELIMINATED BY TERMINATING MOUNTING COROS FROM TRANSMITTER AND LOUDSPEAKER DIRECTLY TO CONTROL UNIT. WHEN CONTROL UNIT IS LOCATED AT EQUIPMENT, ELIMINATE ADAPTER AND EXTEND SPEAKERPHONE LEADS THROUGH CONN. CABLE.
 2. ADD STRAP WHEN BUSHY LAMP IS PROVIDED.
 3. CONNECT SP2 LEAD TO TERMINALS 24 OR 30 WHEN REDUCED LOUDSPEAKER VOLUME IS DESIRED.
- * 55A CONTROL UNIT MODIFIED BY WESTERN ELECTRIC CO.

Fig. 2—Connections For 2565-Type Telephone Set Using 149-Type Adapter (Sheet 2 of 2)